



*Total Solution Provider in Saw Device*

---

# SL06219EV

62.5MHz IF SAW Filter  
19.18MHz Bandwidth  
Revision 0 : 22. April. 2008



- Electrical Characteristics
  - Package Dimensions
  - Testing Environment
  - Frequency Characteristics
- 

**SAWNICS Inc.**

---

460 Cheonheung-ri, Seonggeo-eup, Cheonan-si, Chungcheongnam-do, 330-836 / Korea.  
Tel: +82 41 550 9372 / Fax: +82 41 550 9399 / [www.sawnics.com](http://www.sawnics.com)

## □ Electrical Characteristics

### Maximum Ratings

Parameters Description	Unit	Minimum	Typical	Maximum
Operating Temperature Range	°C	-20	-	70
Storage Temperature Range	°C	-40	-	85
Maximum DC Voltage	V	-	-	10
Maximum Input Power	dBm	-	-	10
Source Impedance (single ended) <sup>(1)</sup>	Ω	-	50	-
Load Impedance (single ended) <sup>(1)</sup>	Ω	-	50	-
Package type & size	V			
Length x Width	mm <sup>2</sup>	-	13.3 x 6.5	-
Height	mm	-	-	1.8

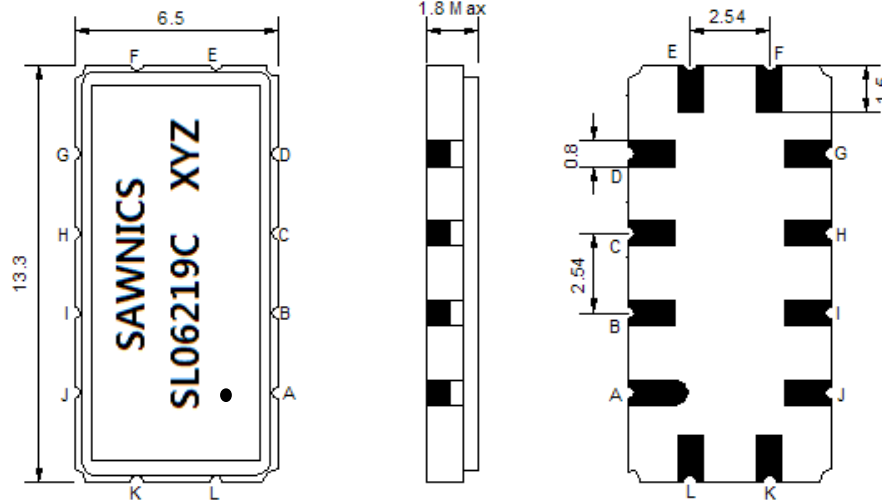
### Electrical Specification

Parameters Description	Unit	Minimum	Typical	Maximum
Center Frequency (Fo)	MHz	62.4	62.5	62.6
Insertion Loss at Fo	dB	-	14.7	16.0
Temperature Coefficient	ppm/°C	-	-86	-
Amplitude Ripple within fo ±9.22 MHz	dB <sub>p-p</sub>	-	0.45	0.80
Group Delay Variation within fo ±9.22 MHz	nsec	-	45	60
Absolute Delay at Fo	µsec	-	1.11	-
Bandwidth at -1.0 dB	MHz	-	19.18	-
Bandwidth at -15.0 dB	MHz	-	21.40	-
Bandwidth at -40.0 dB	MHz	-	23.10	24.0
<b>Relative Attenuation:</b>				
Lower Sidelobe	dB	45	48	-
Upper Sidelobe	dB	45	48	-

**Notes :** (1) With Matching Network (Ref. Testing Environment Circuit as shown below).

Those impedances could be modified with different impedance values and/or structures, if necessary.

### Package Dimensions

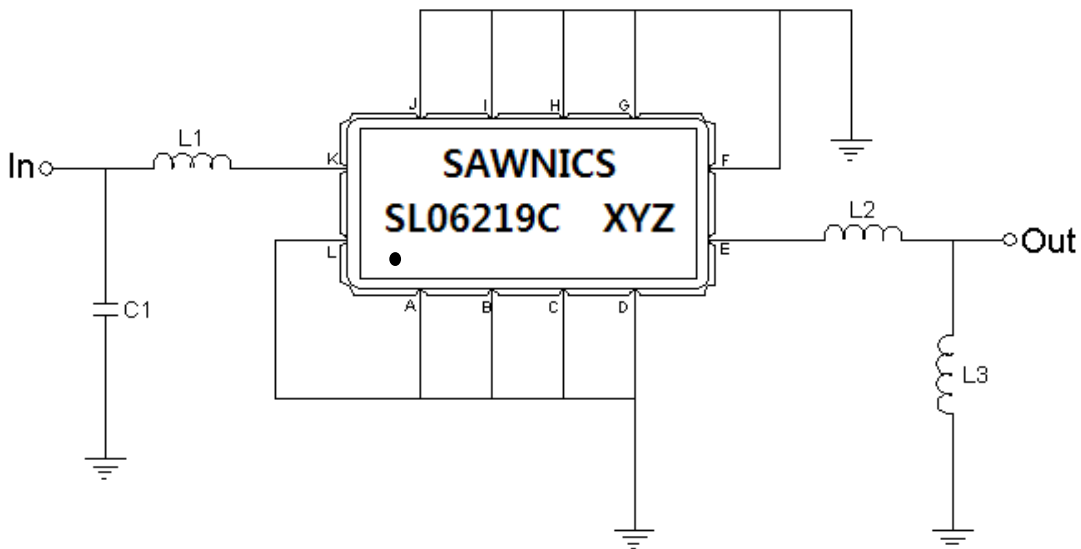


- ① SAWNICS: Brand
- ② SL06219C: Model Name
- ③ X : Date Code (Year)
- ④ Y : Date Code (Month)
- ⑤ Z : Date Code (Date)

● : Index Dot

Pin Description	
A, B, C, D, F, G, H, I, J, L	Ground
K	Input
E	Output

### Testing Environment



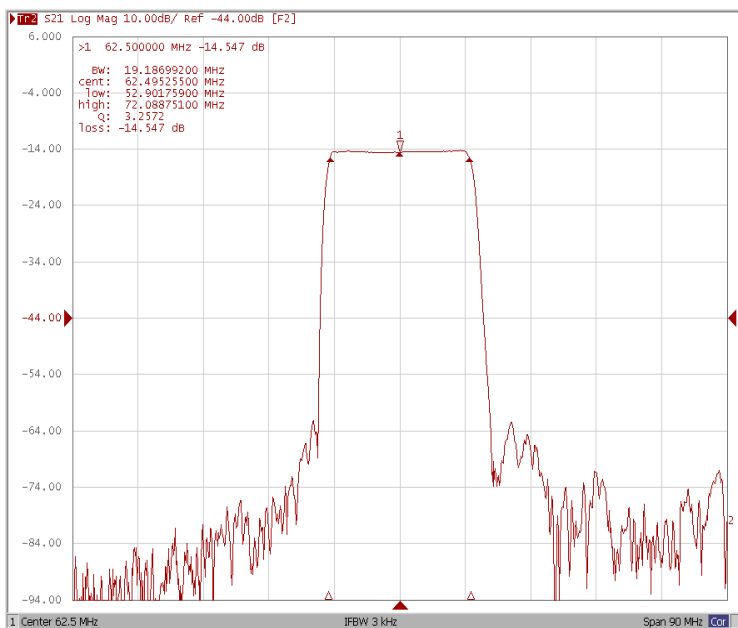
Test Fixture & Values	
Input	L1=150nH , C1=36pF
Output	L2=27nH , L3=100pF
Source/Load Impedance	50 Ω



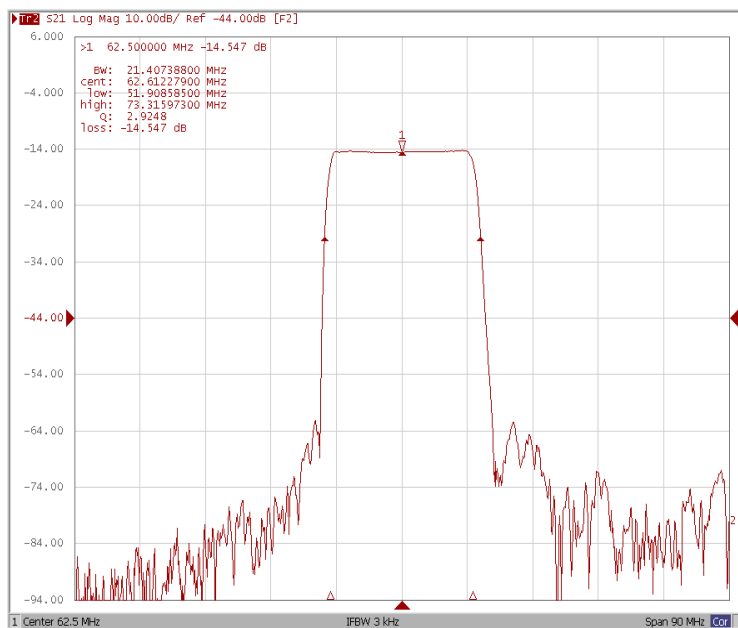
# Frequency Characteristics

## Frequency Response

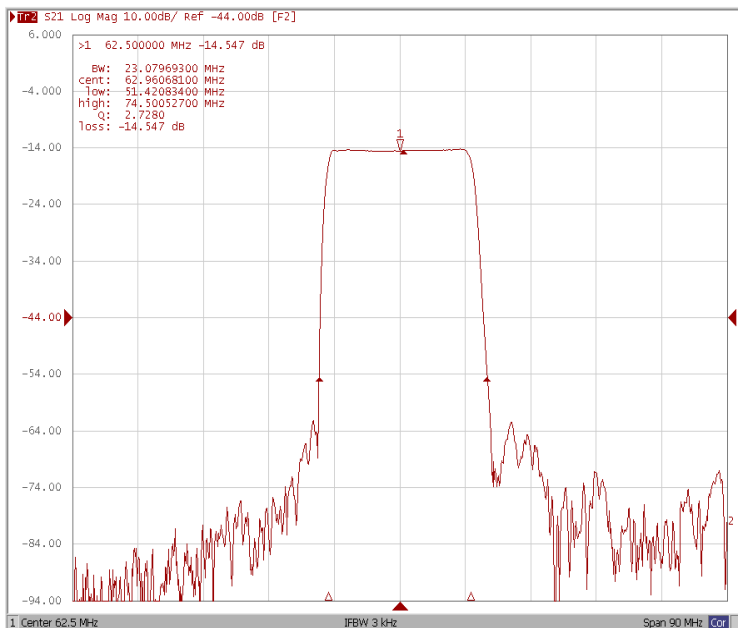
Bandwidth at -1.0 dB



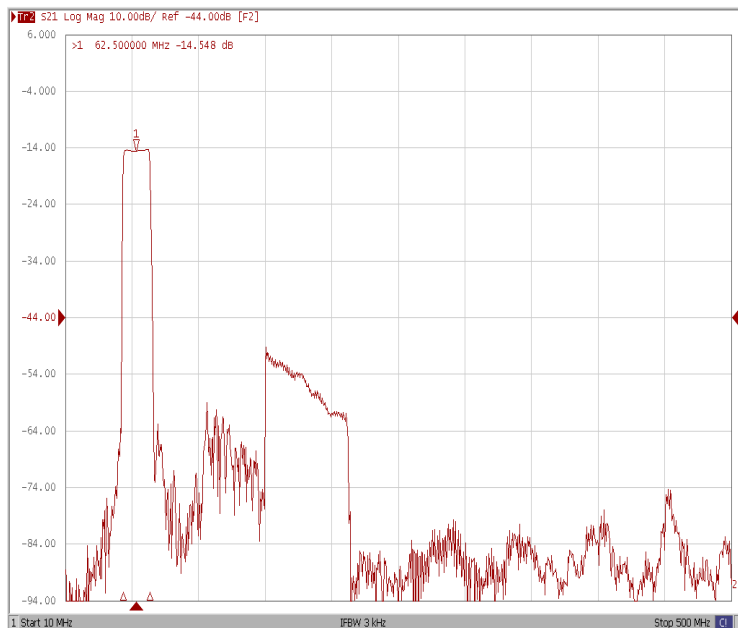
Bandwidth at -15.0 dB



Bandwidth at -40.0 dB



Wide-Band

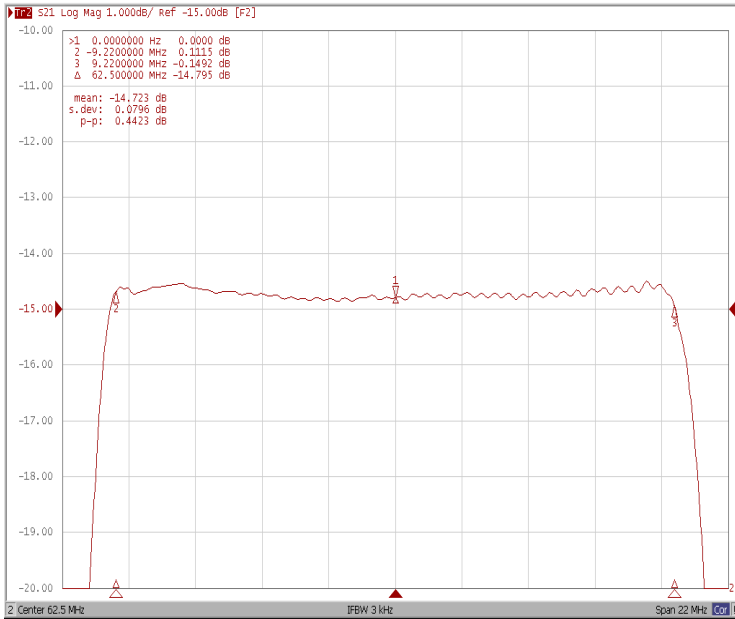




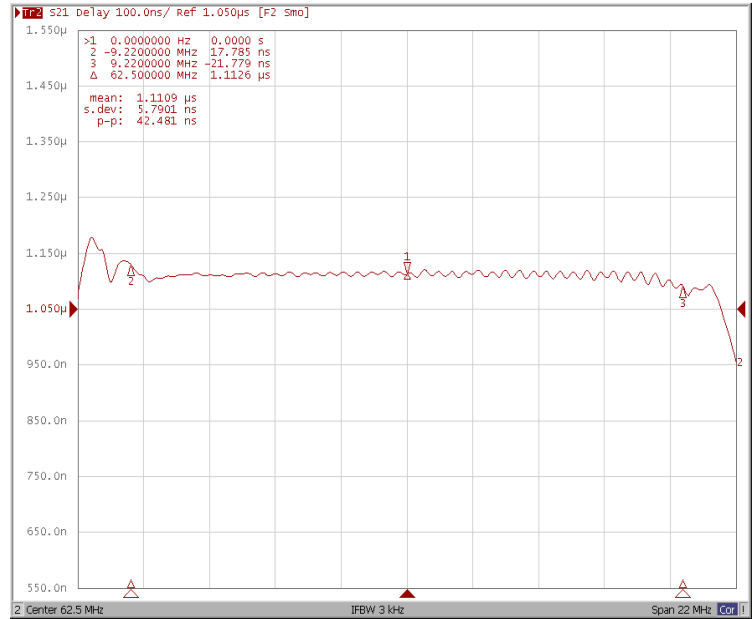
**Frequency Characteristics**

**Frequency Response**

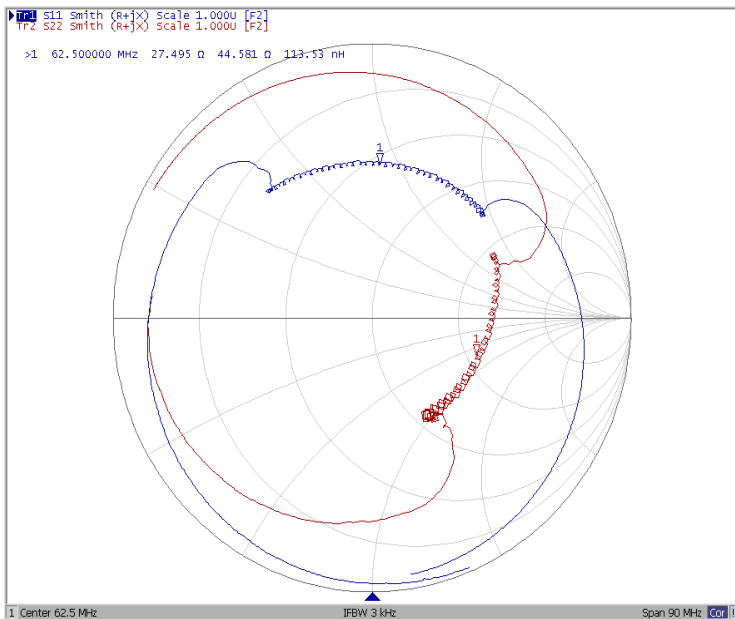
**Ripple Variation Fo±9.22MHz**



**Group Delay Variation Fo±9.22MHz**



**Smith Chart**



**SWR**

